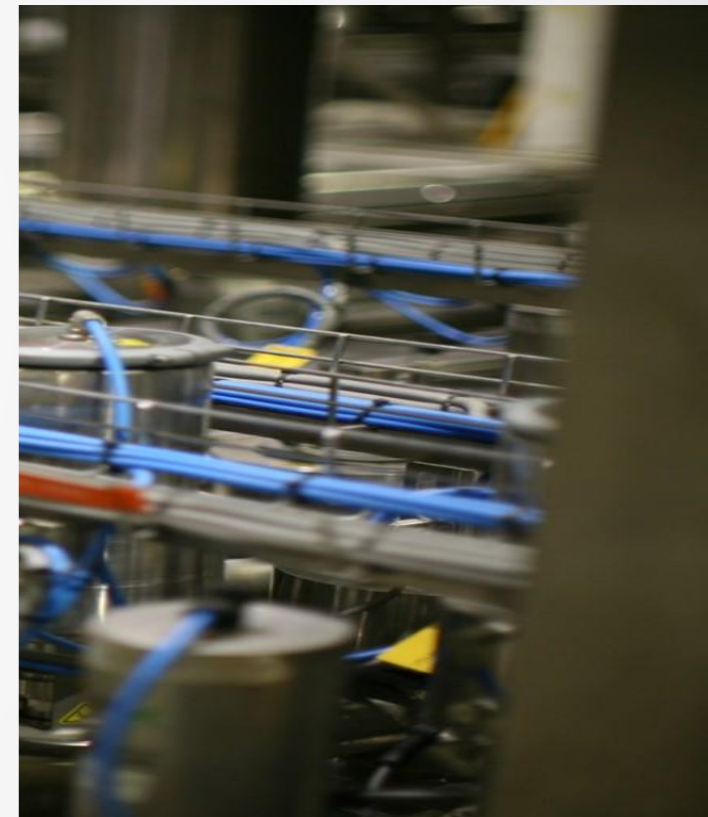


上海梵茨科技工程有限公司

Shanghai VANNCEL Technology  
Engineering Co., Ltd.

**think  
different...**



# 电气和自动化

Electrical and Automation



CP09





# 电气自动化

与许多电气工程公司一样，  
我们提供：

- 仪器仪表选型
- 电气设计
- 电气柜集成
- 现场调试安装
- 软件工程和设计

不同的是，基于我们工艺以及自动化背景，我们可以提供更节能，更合理以及更符合客户需求的方案。

# Electrical & Automation

Similar like other engineering company, we provide:

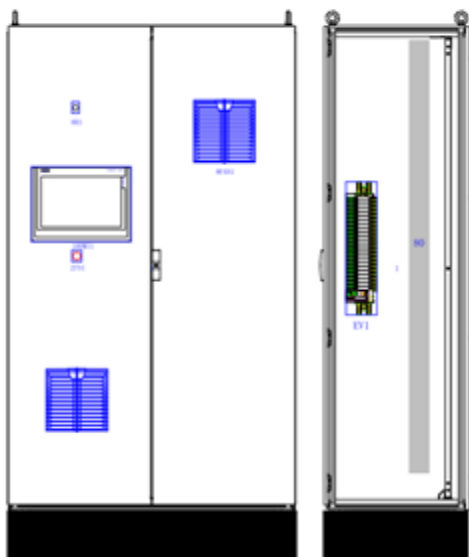
- Instrument Selection
- Electrical Diagram Engineering
- Cabinet Integration
- Installation and Commissioning
- Software engineering

Different is based on our technology know-how and automation background, we will provide solutions, which are more efficiency, energy saving and more close to customer requirement.

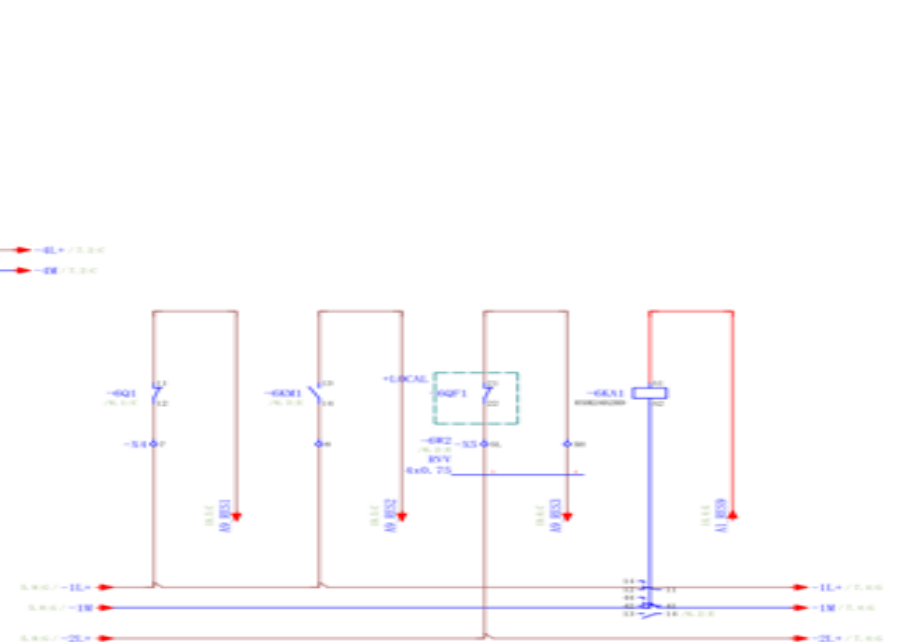
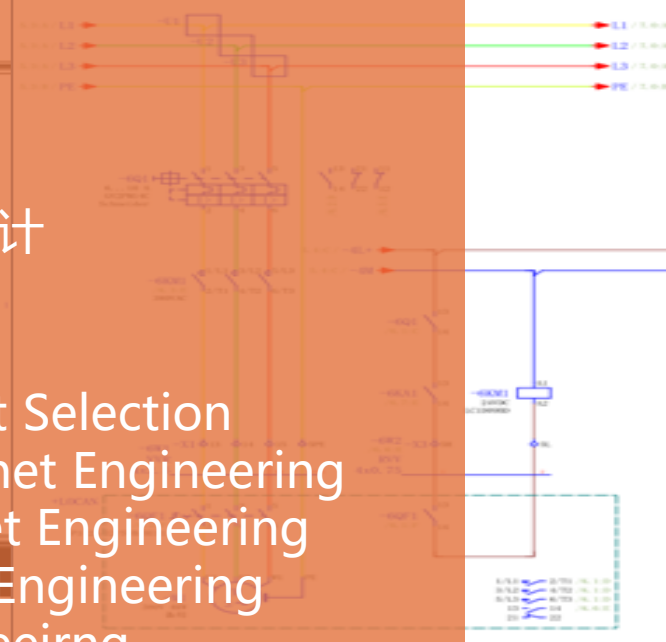
# 电气设计

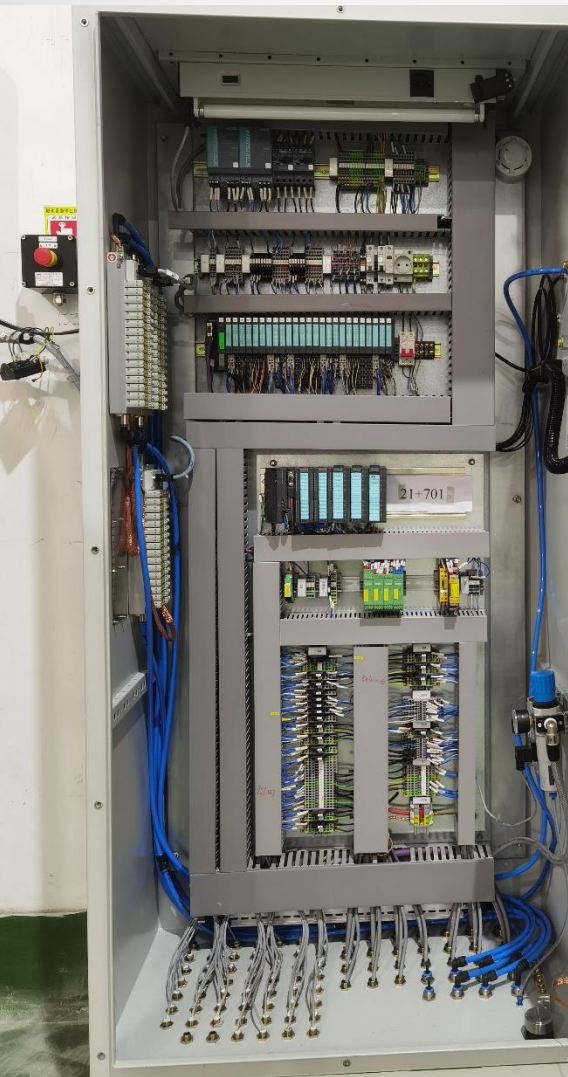
Electrical Engineering

- 仪表选型
  - 动力柜设计
  - 子站柜设计
  - 网络设计
  - 现场电气设计
- 
- Instrument Selection
  - MCC Cabinet Engineering
  - I/O Cabinet Engineering
  - Networks Engineering
  - Site Engineering



2400  
2300  
2200  
2100  
2000  
1900  
1800  
1700  
1600  
1500  
1400  
1300  
1200  
1100  
1000  
900  
800  
700  
600  
500  
400  
300  
200  
100





# 电柜集成

Cabinet Integration





# 电气安装和调试

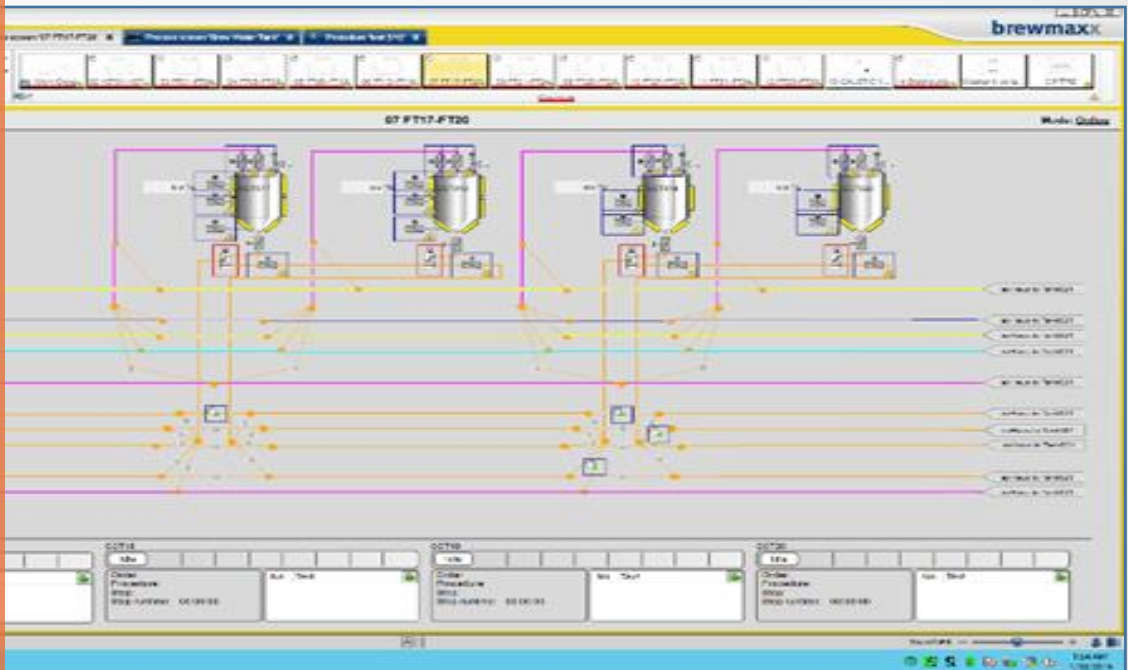
Electrical Installation &  
Commissioning



# 自动化

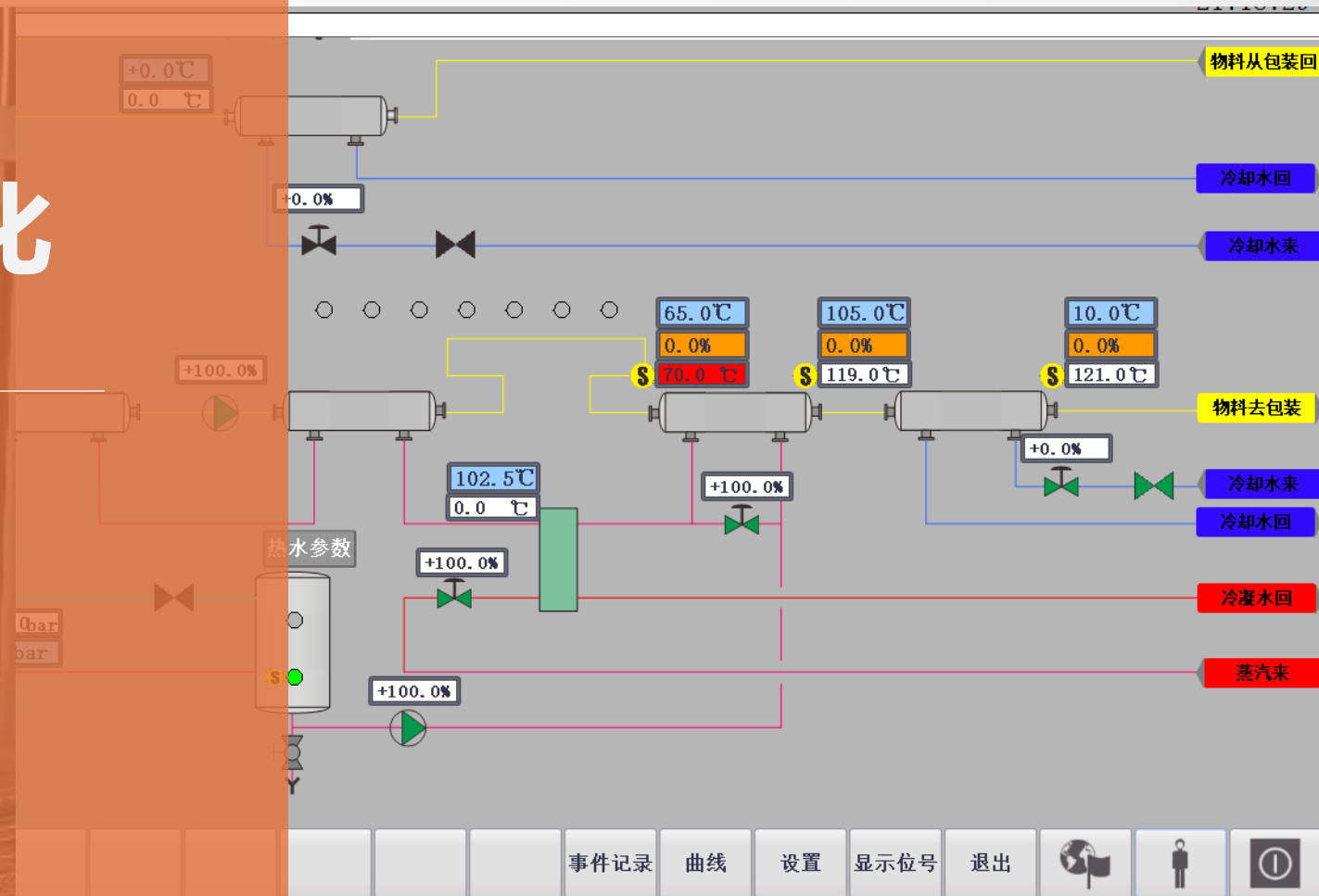
Automation

- 基于不同的自动化平台
  - SIEMENS
  - Rockwell
  - PlantIT
- 集成数据采集
- 集成自开发智能模块
- 拥有多项自主开发软件注册权
- Based on different Platforms
  - SIEMENS
  - Rockwell
  - PlantIT
- Data Collection
- Smart Models



# 自动化

Automation





# 现场调试 & 远程调试

Customer's Benefit

现场调试

Site Commissioning

远程调试

Remote Commissioning

VANNCEL  
—— 梵茨工程 ——



**上海**  
**Head Office**



+86 21 6477 6006



上海市闵行区梅富路228号C栋215室

RM215, Building C, No. 228 Meifu  
Road, Minhang District, Shanghai,  
PR of China

**香港**  
**Branch Office**



+852 2637 9373



香港沙田安心街11号华顺广场628室

RM628, Topsail Plaza,  
No. 11 On Sum Str.  
Shatin, N.T., Hong Kong

